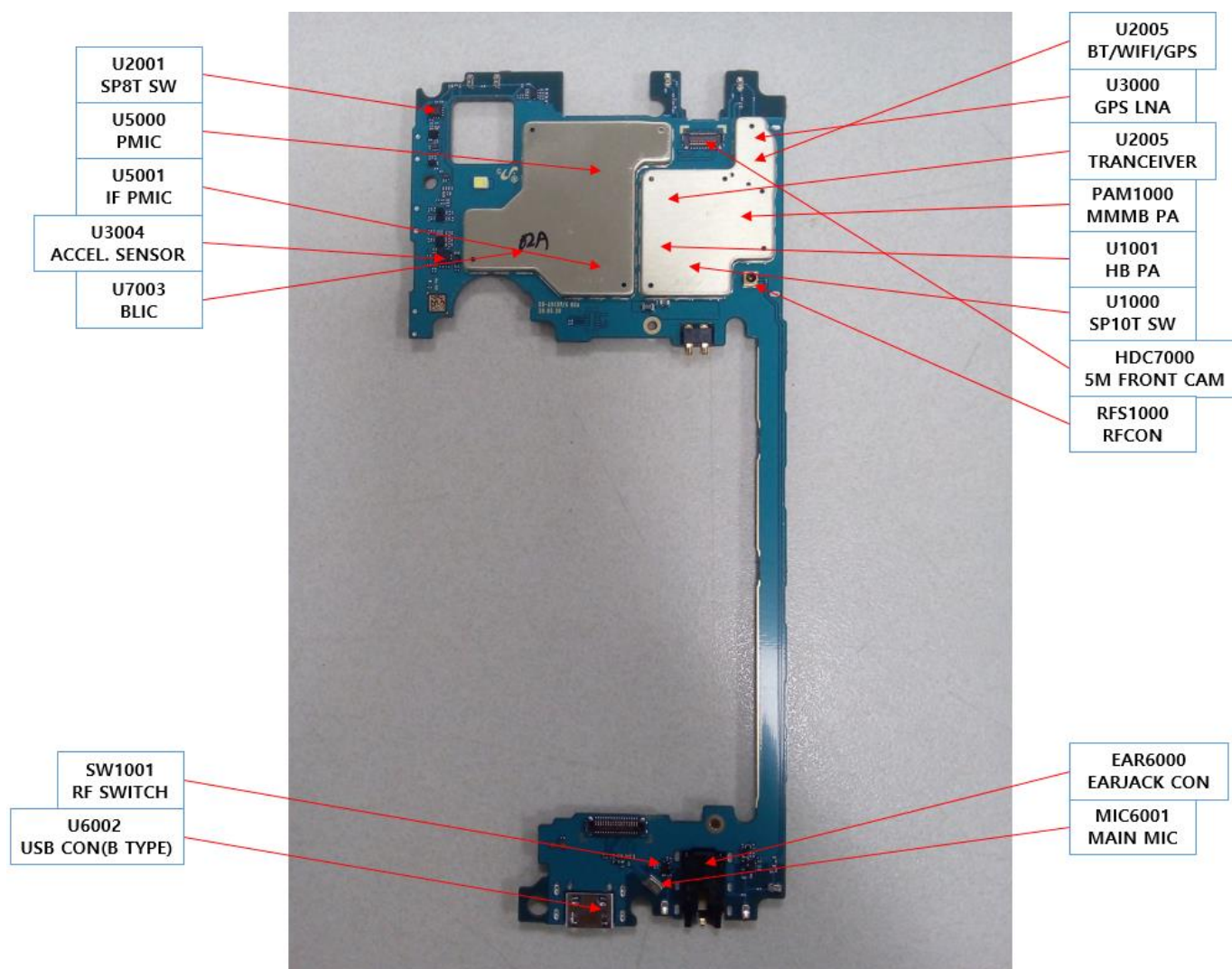

8. Level 3 Repair

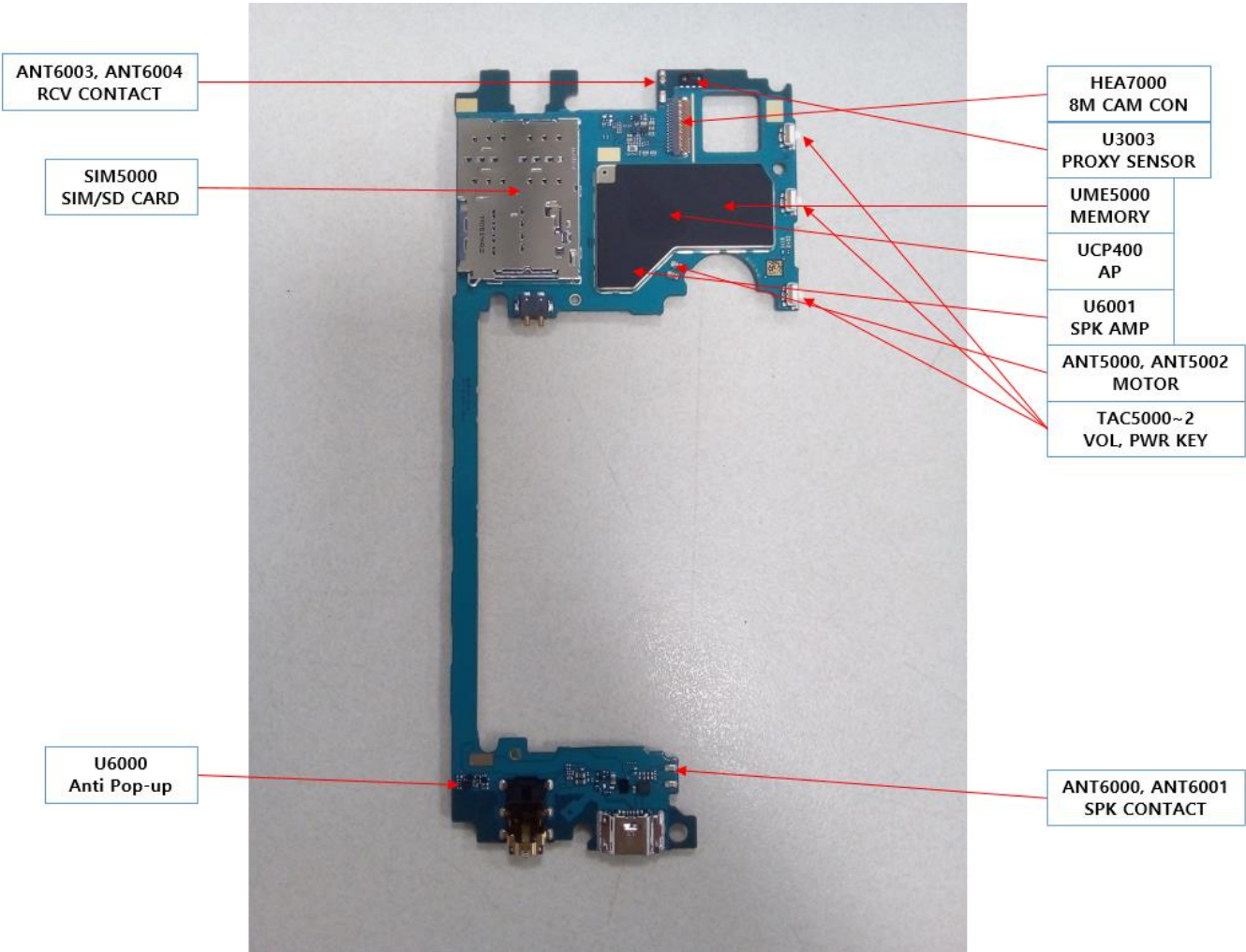
8-1. Components Layout

PBA (TOP SIDE)

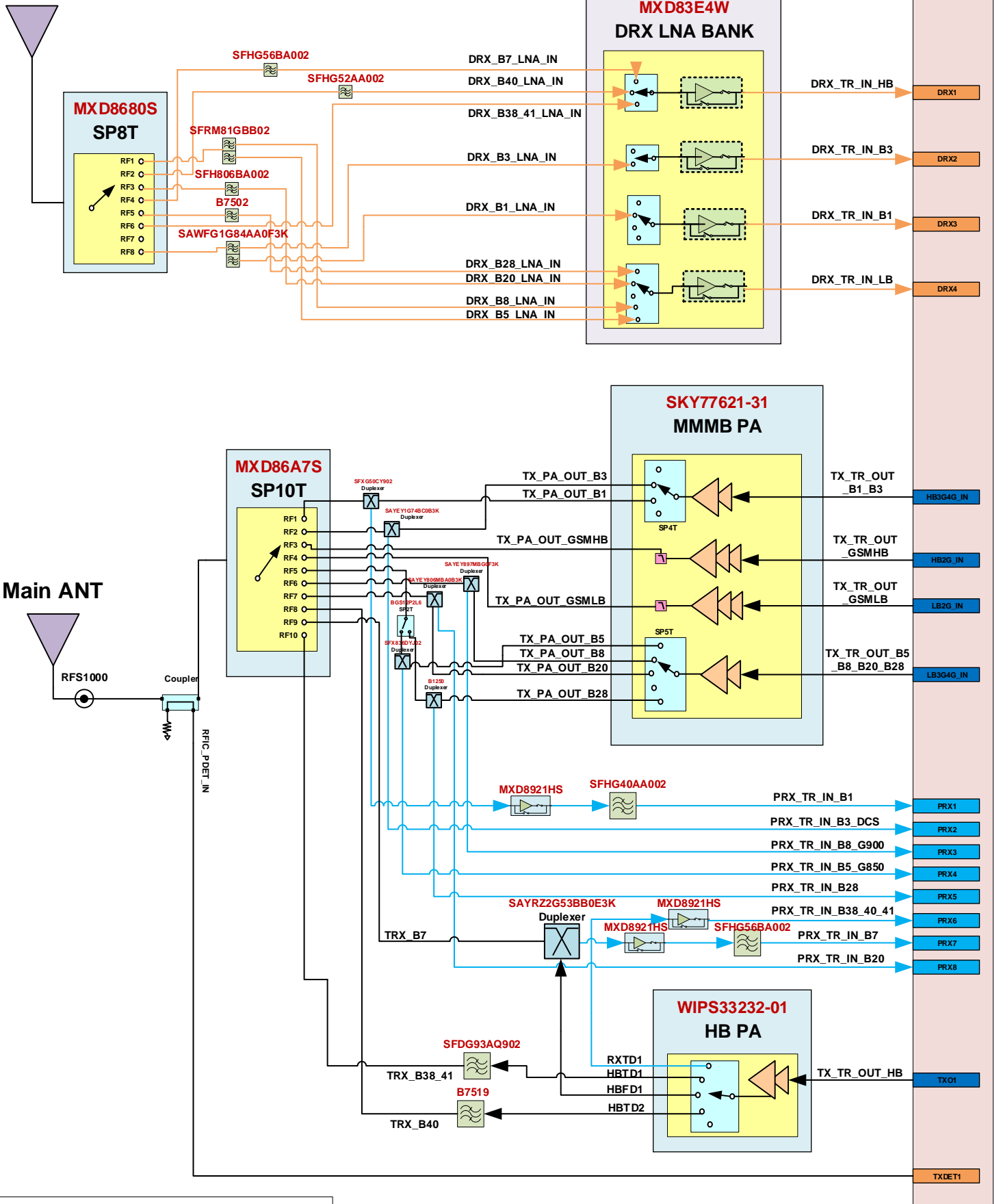


8. Level 3 Repair

PBA (BOTTOM SIDE)



SUB ANT



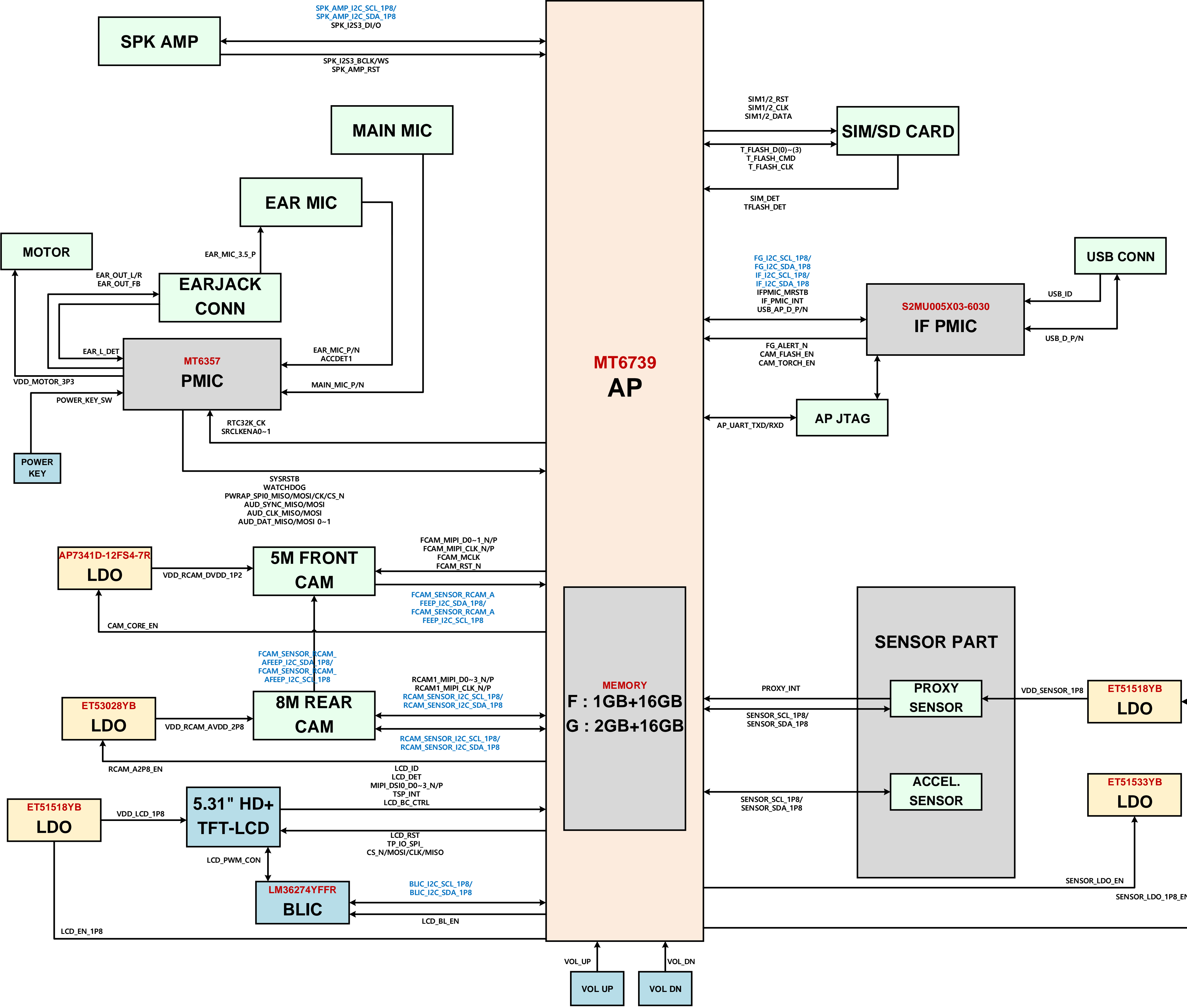
**[SM-A013F_REV0.1 RF BAND]
(MEA/CIS/AFR/SWA/SEA)**

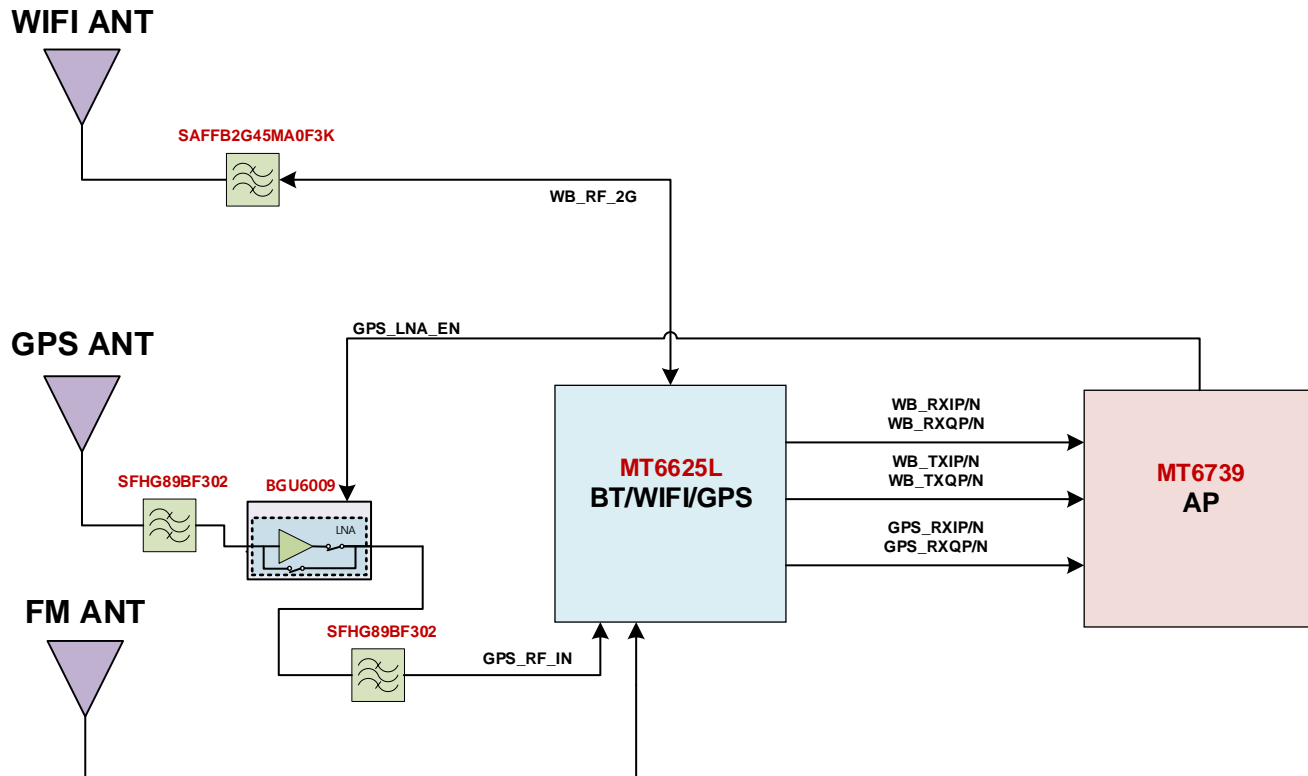
2G : 850/900/1800

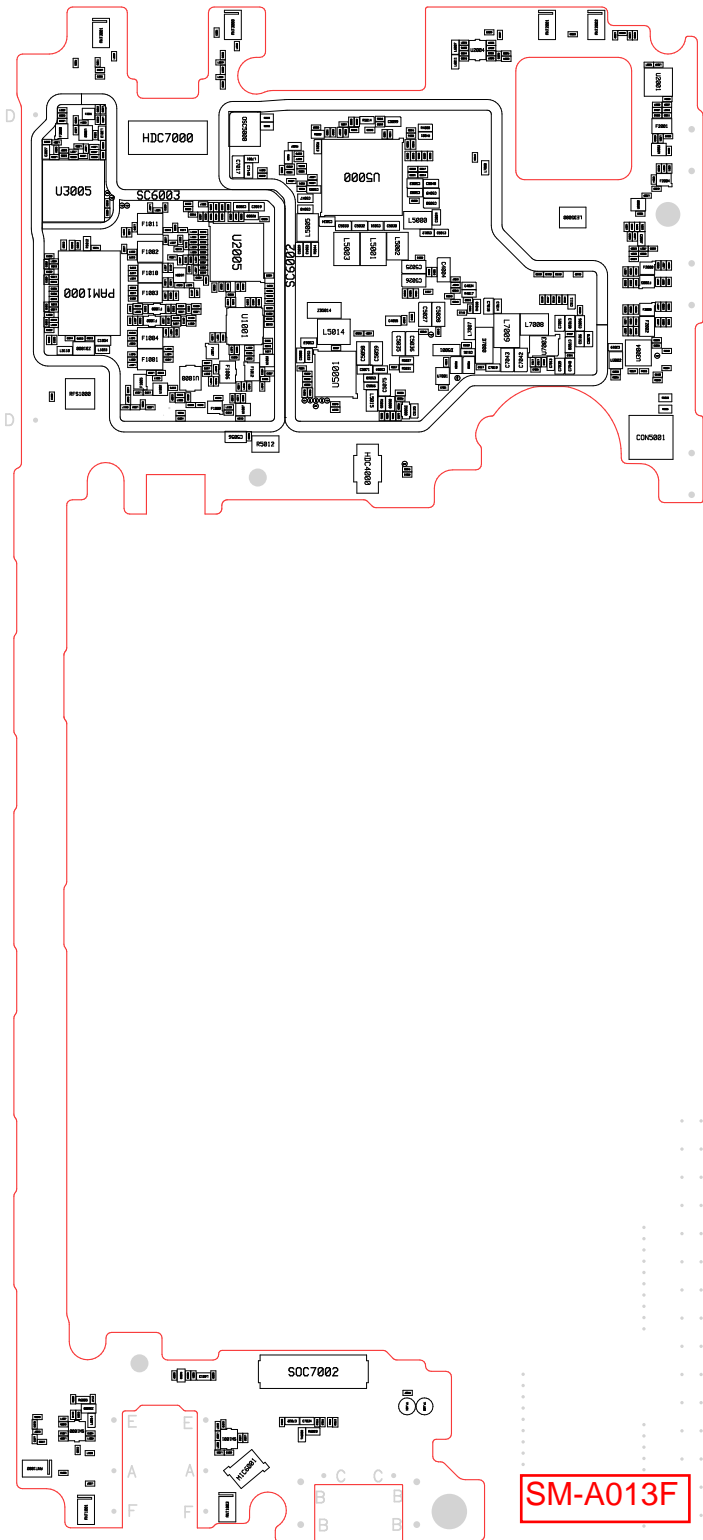
3G : W1, W5, W8

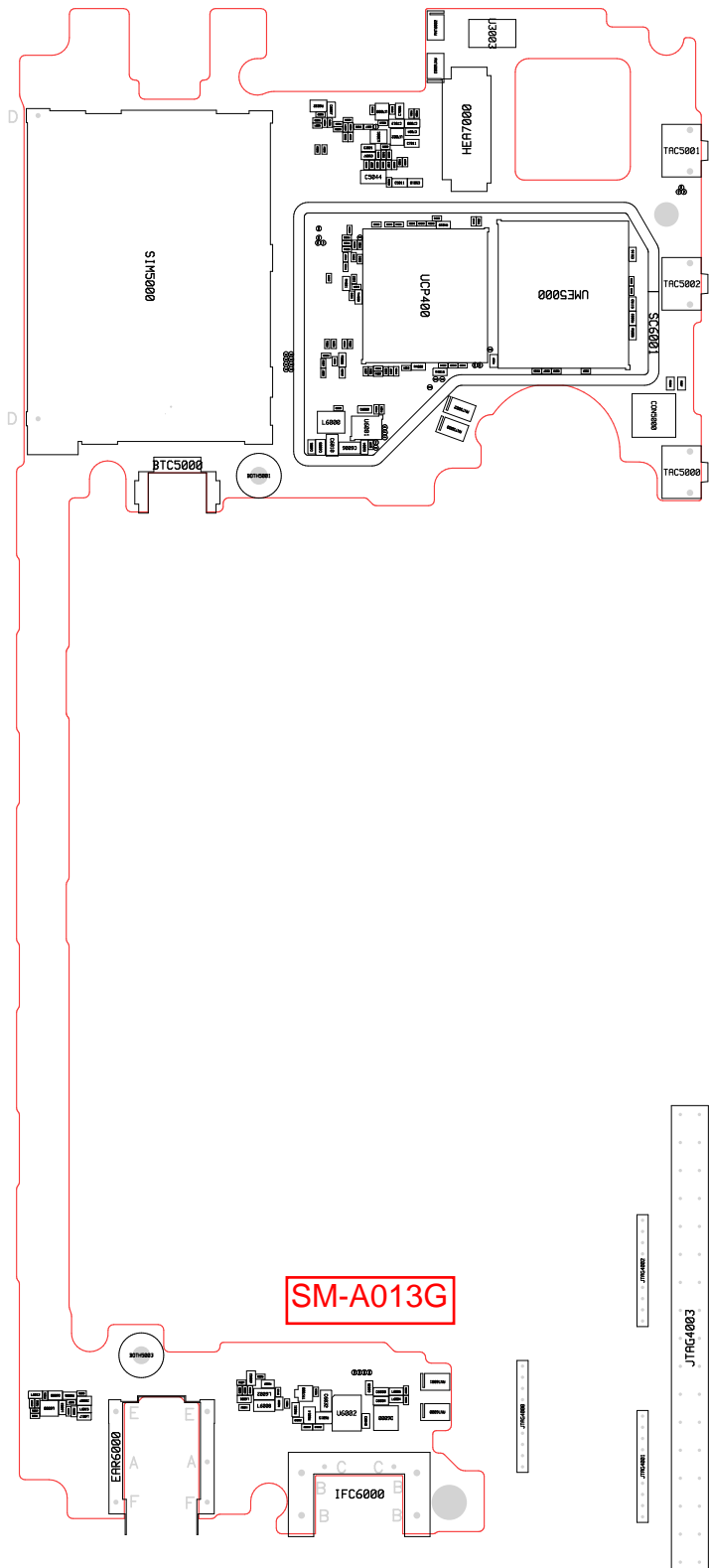
LTE FDD : B1,B3,B5,B7,B8,B20,B28

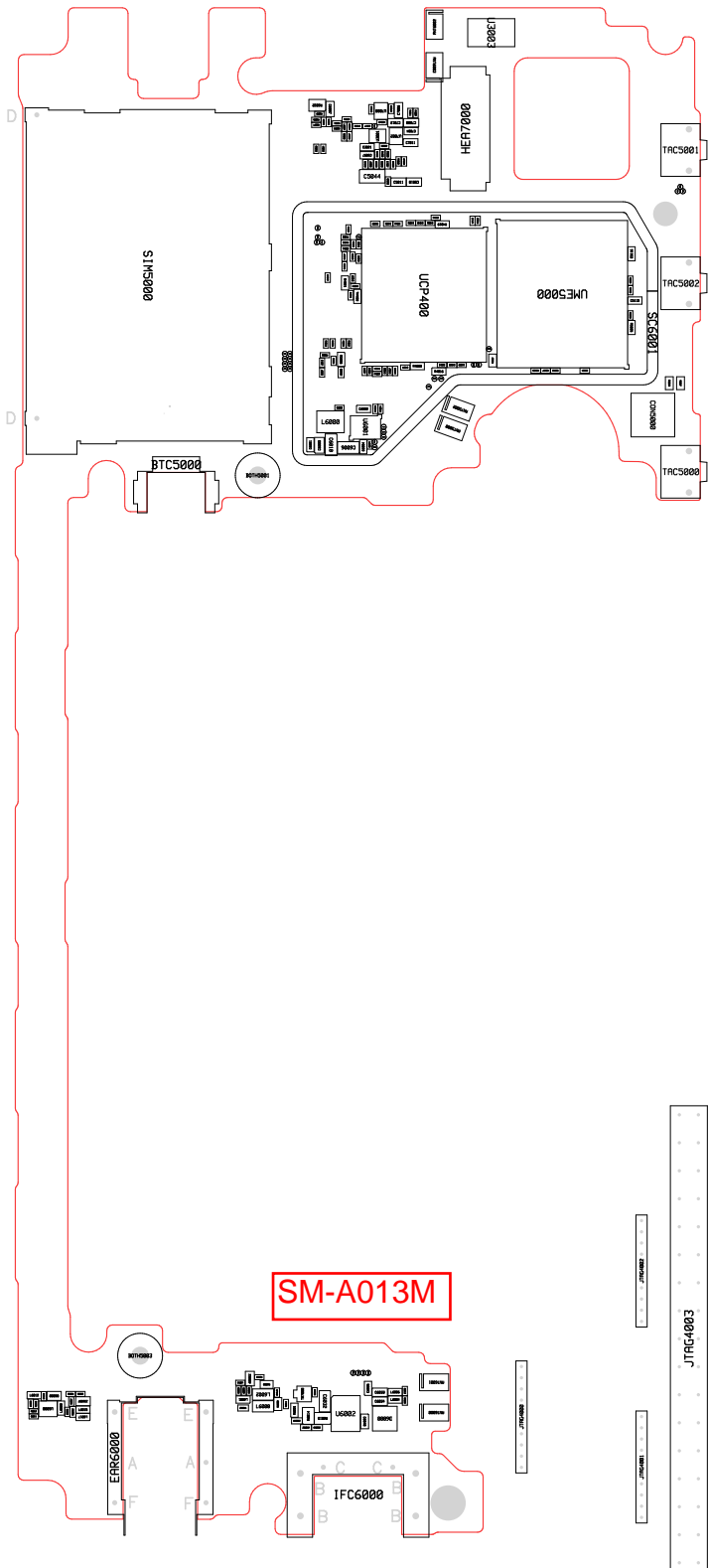
LTE TDD : B38,B40,B41





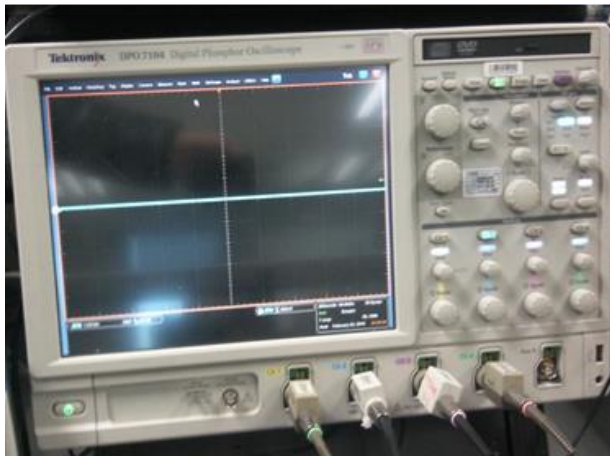






8. Level 3 Repair

8-3. Flow chart of Troubleshooting.



Oscilloscope



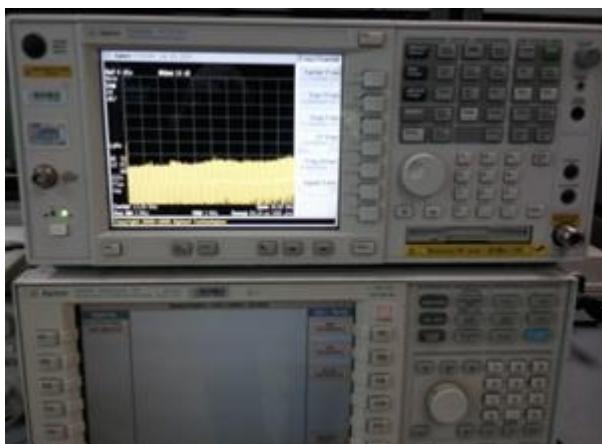
Digital Multimeter



Power Supply



+ driver, ESD Safe Tweezer



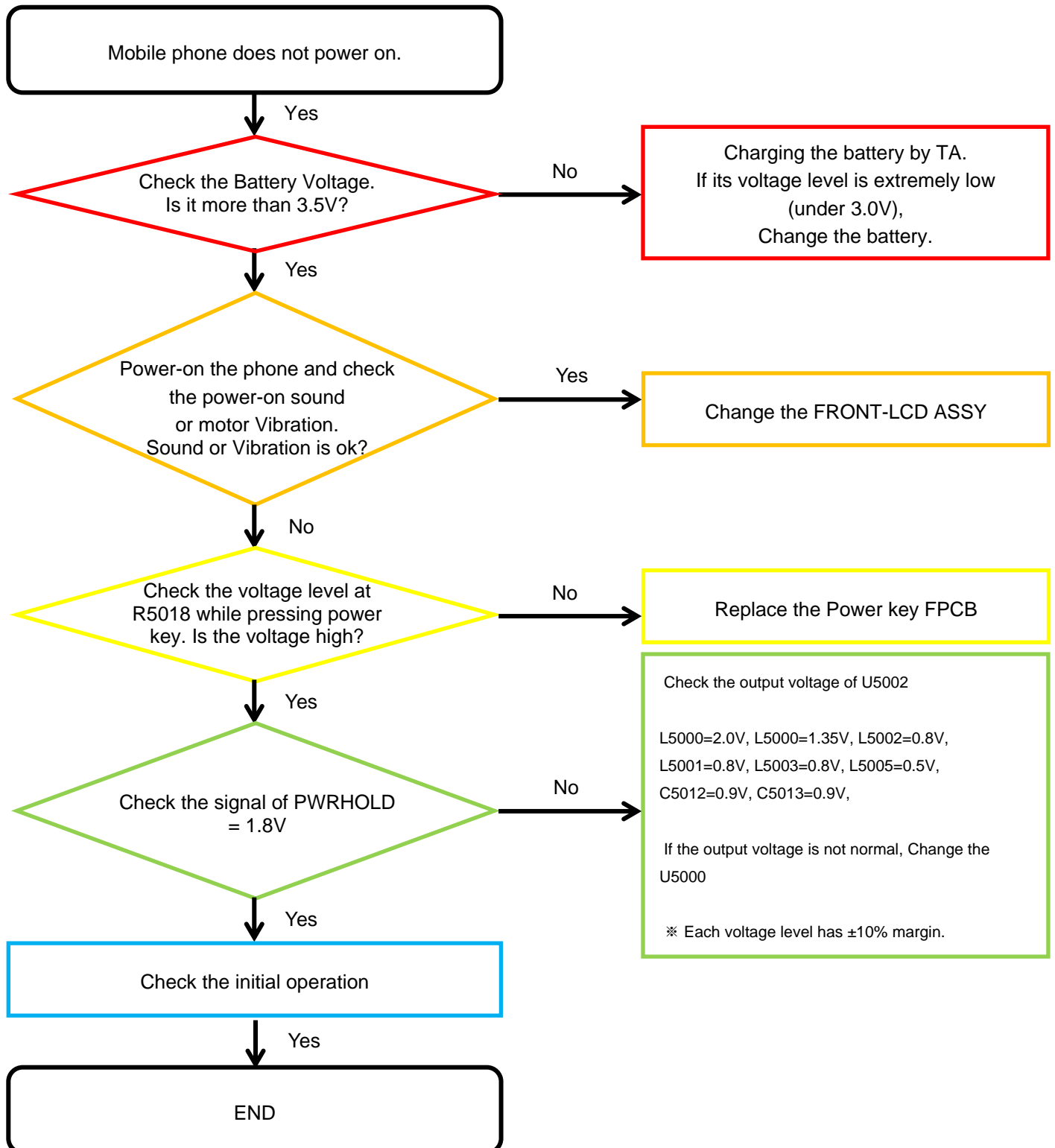
8960 & Spectrum Analyzer



Soldering iron

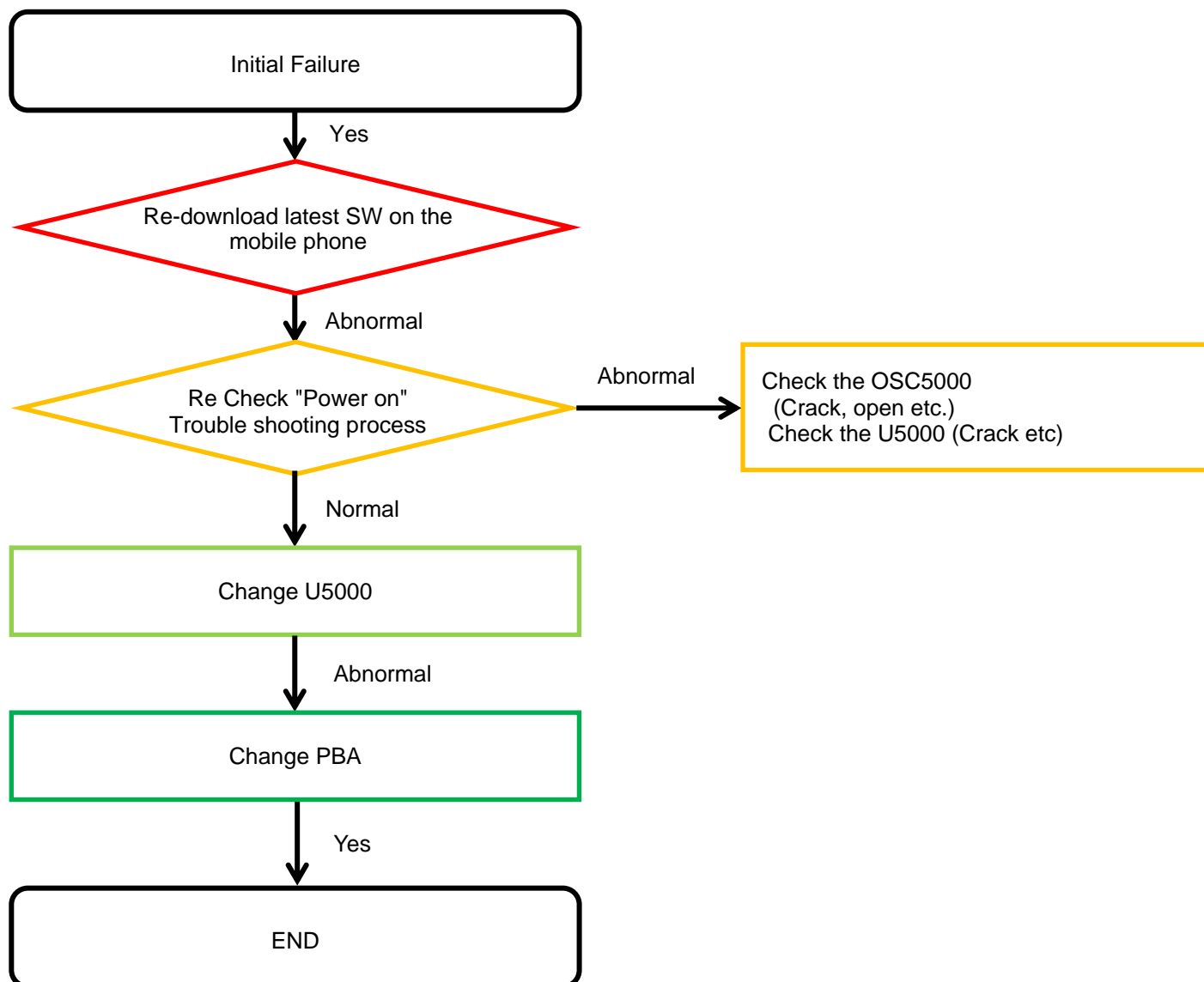
8. Level 3 Repair

8-4-1. Power On



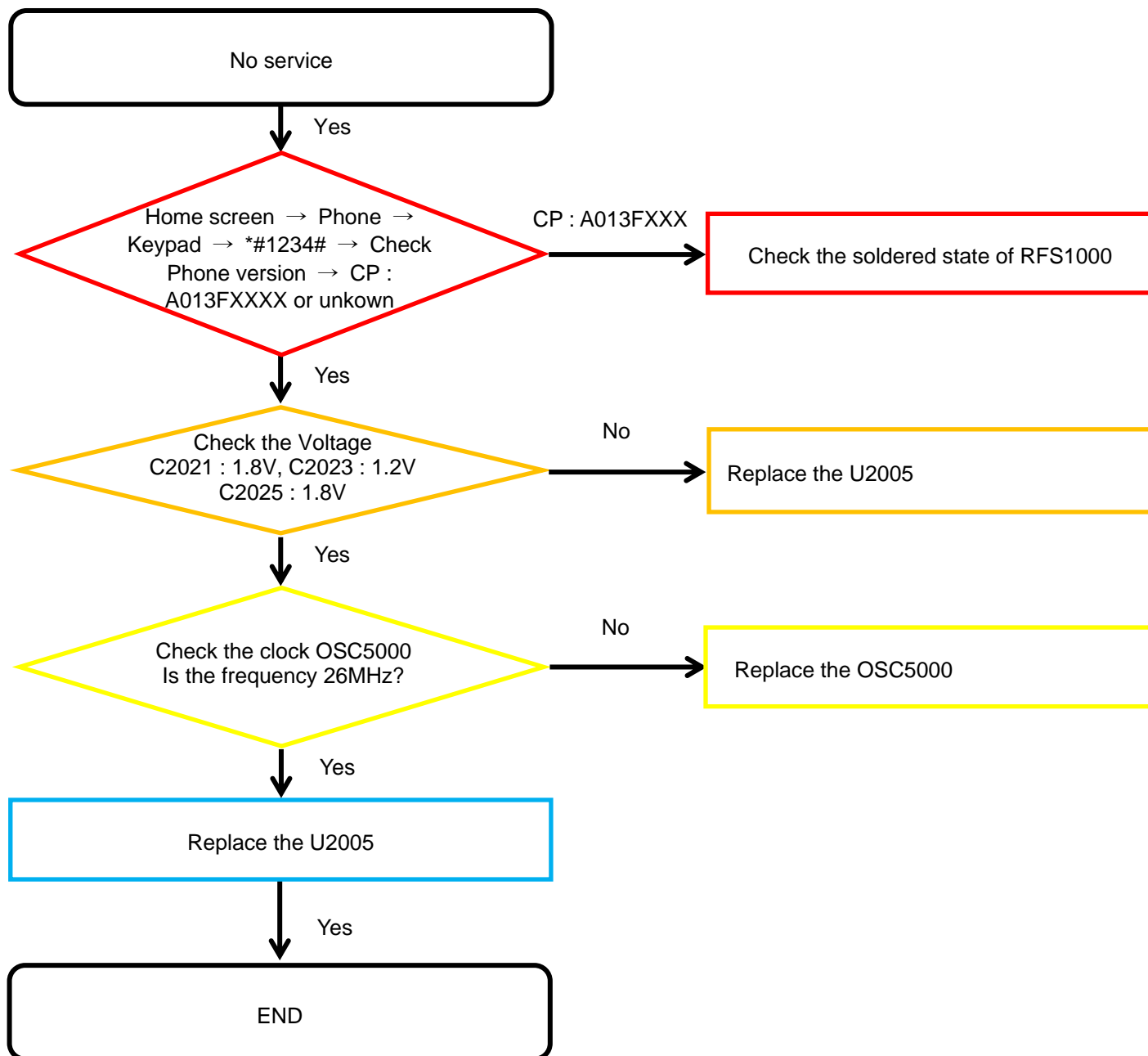
8. Level 3 Repair

8-4-2. Initial



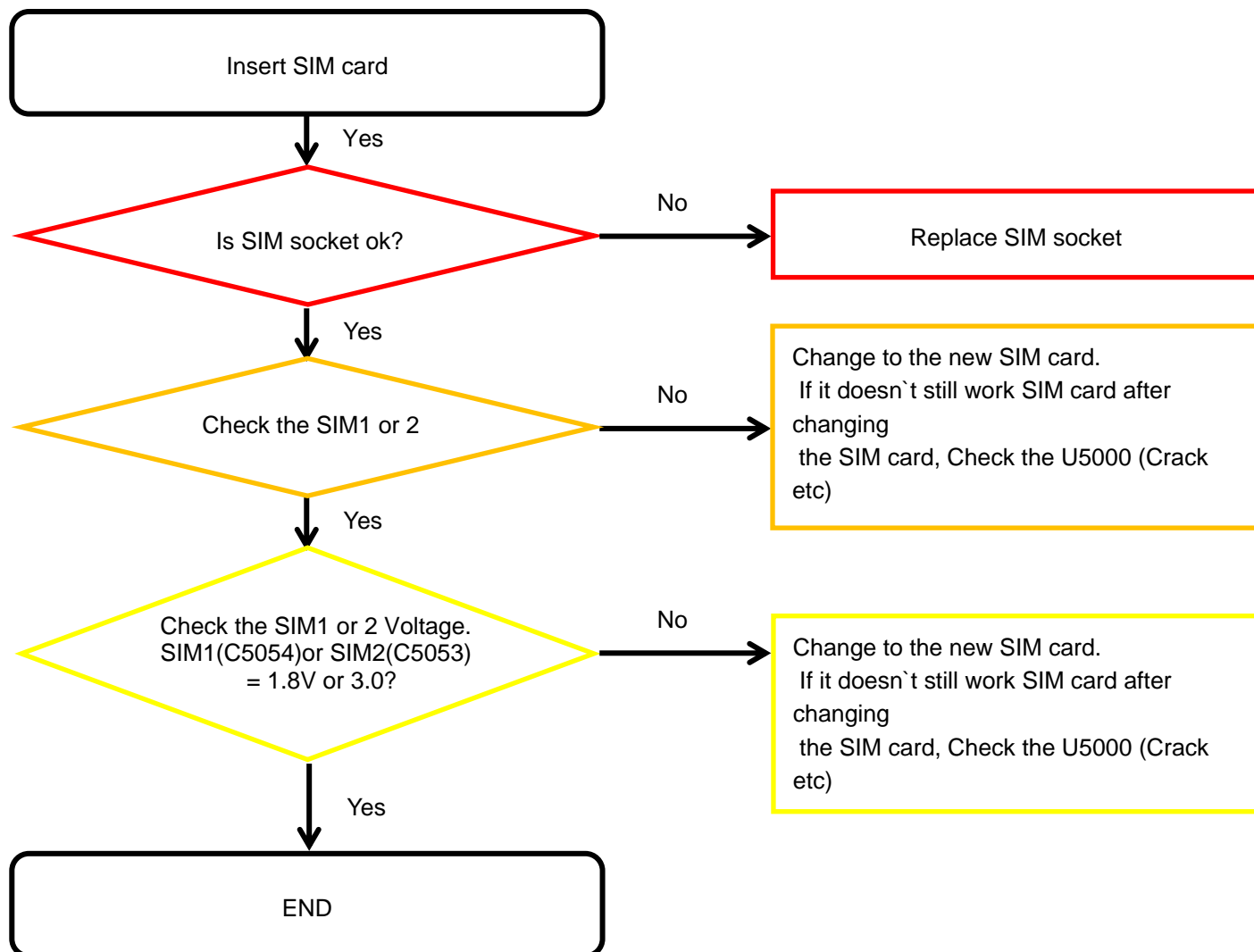
8. Level 3 Repair

8-4-3. No Service



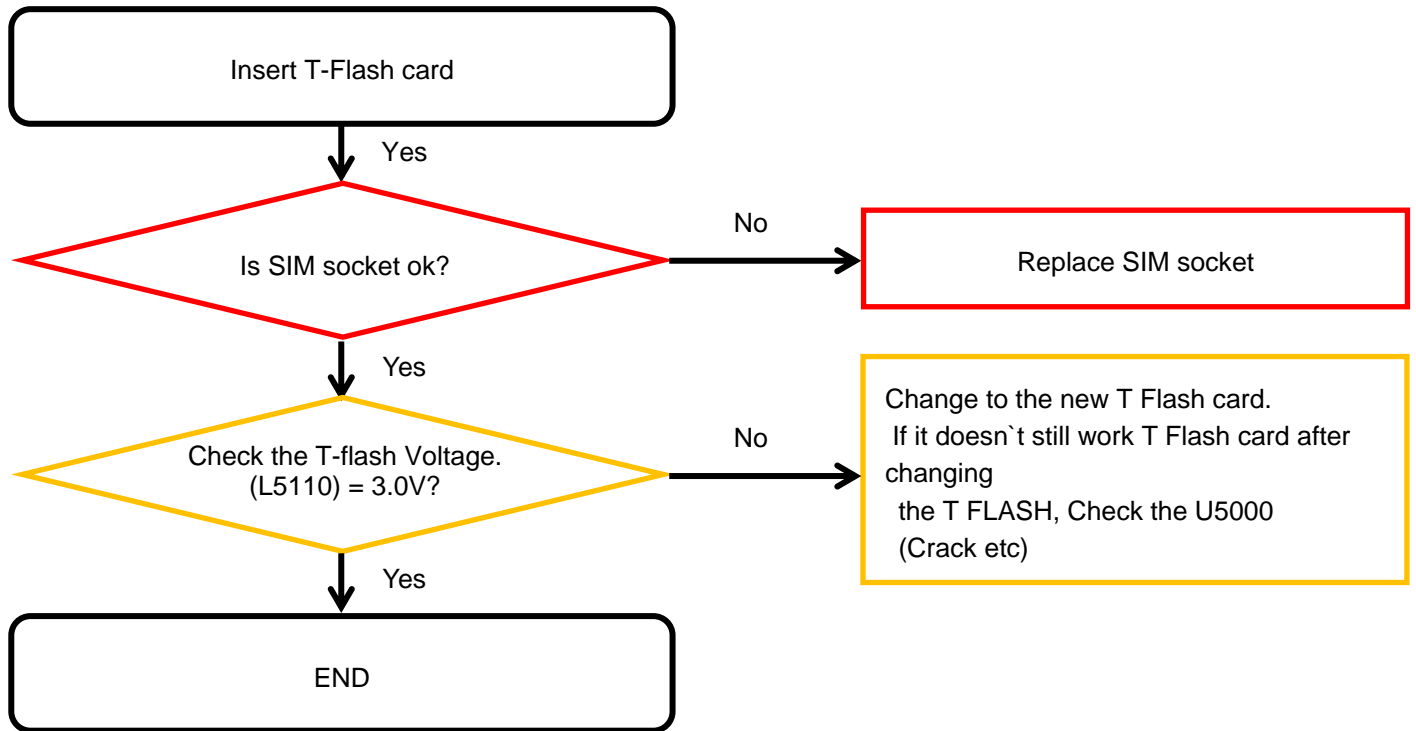
8. Level 3 Repair

8-4-4. SIM Part



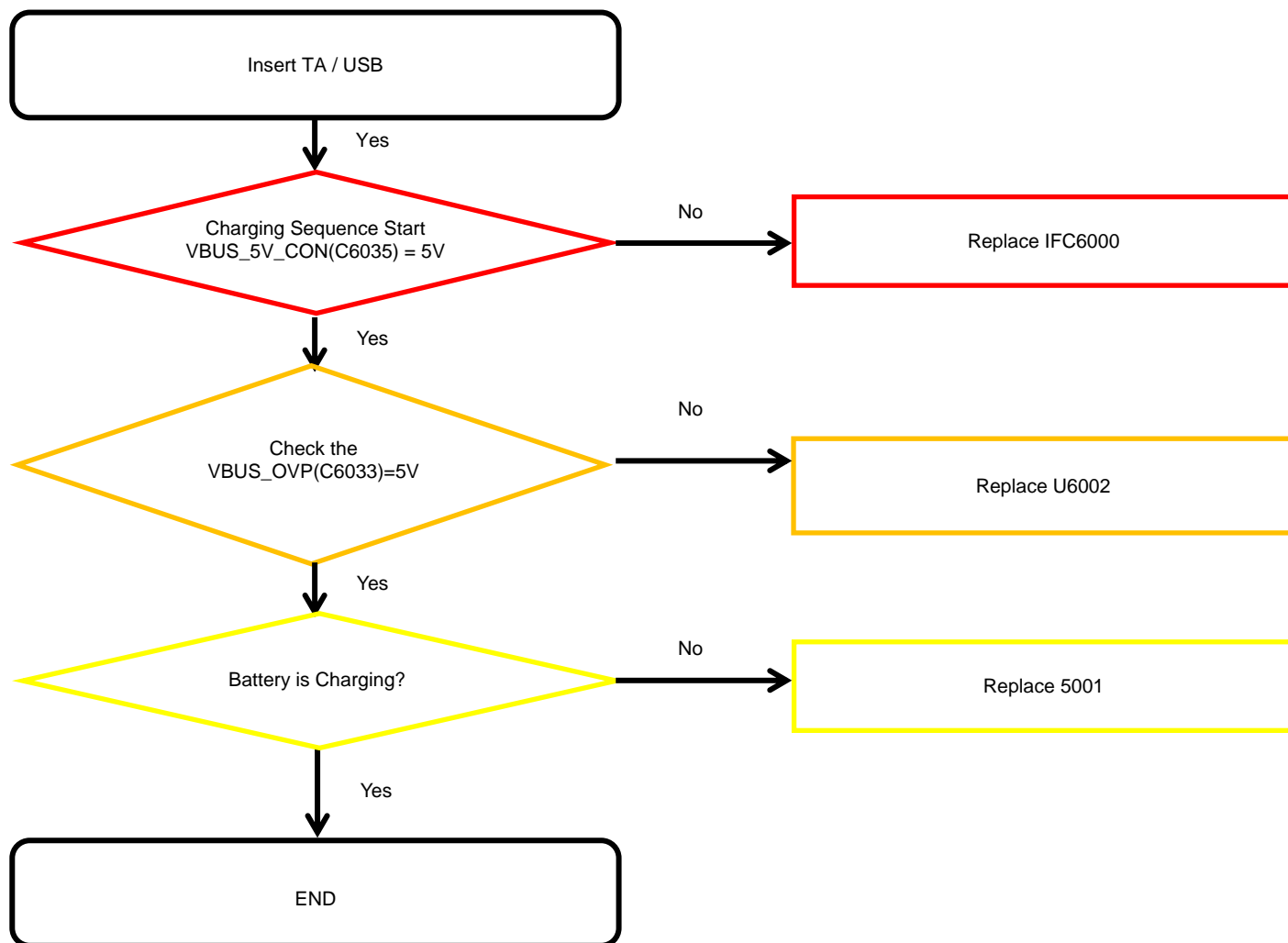
8. Level 3 Repair

8-4-5. T-Flash Part



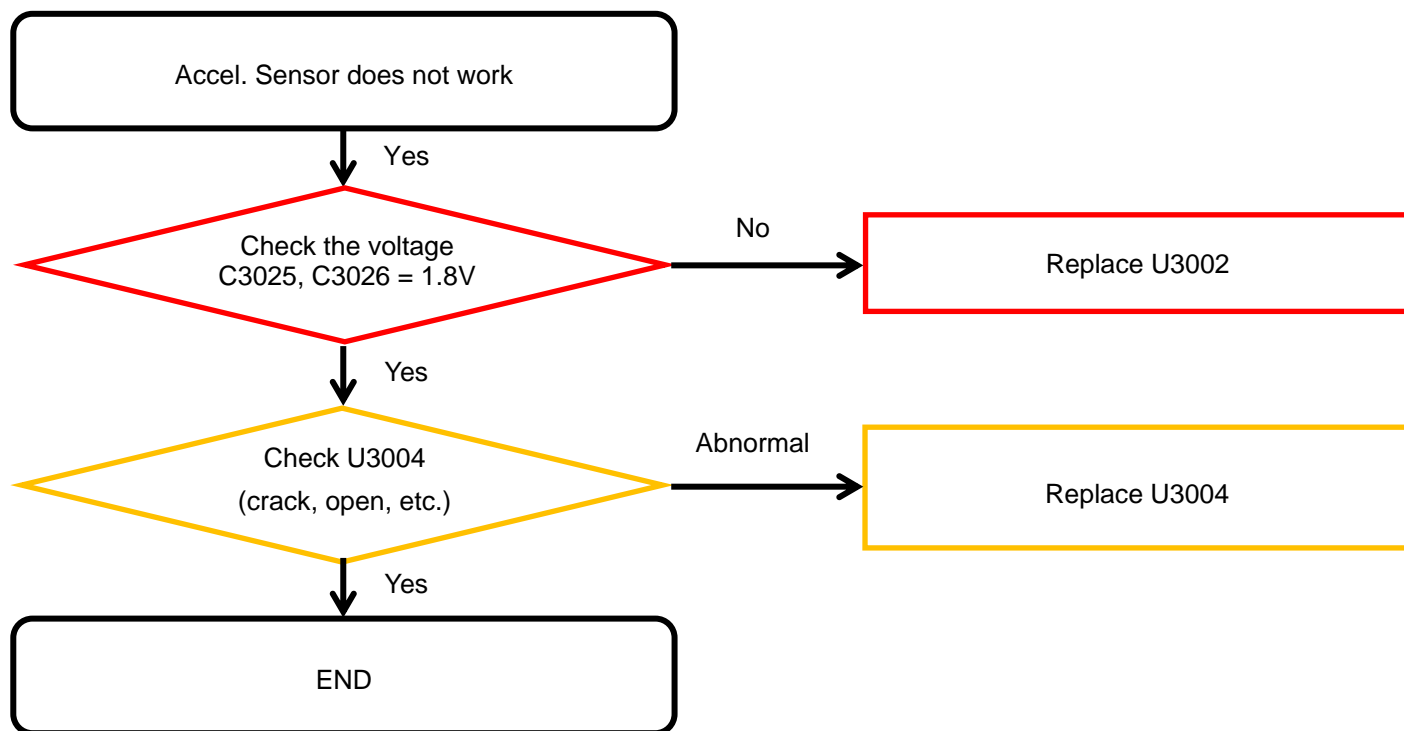
8. Level 3 Repair

8-4-6. Cable Charging Part



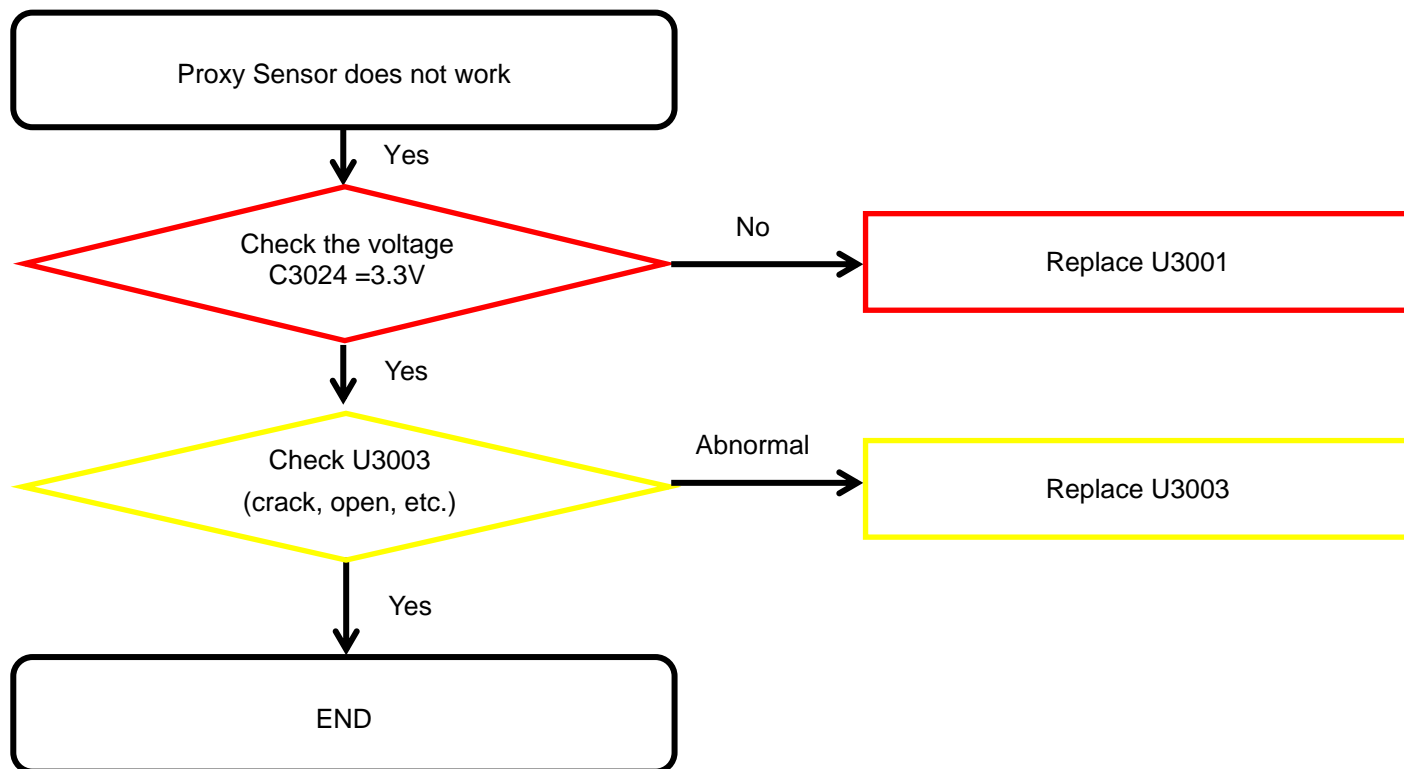
8. Level 3 Repair

8-4-7-1. Accel. Sensor



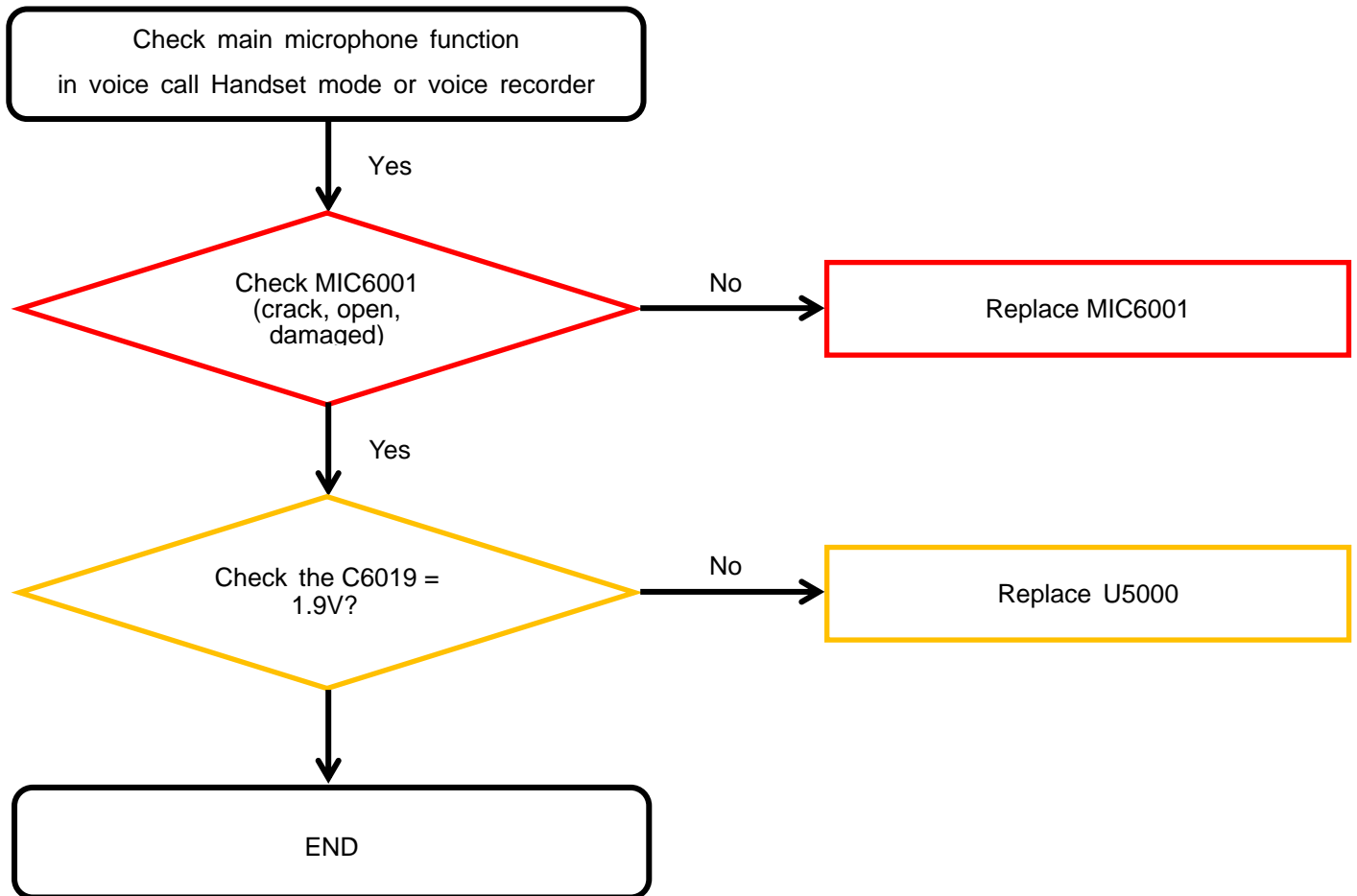
8. Level 3 Repair

8-4-7-2. Proxy Sensor



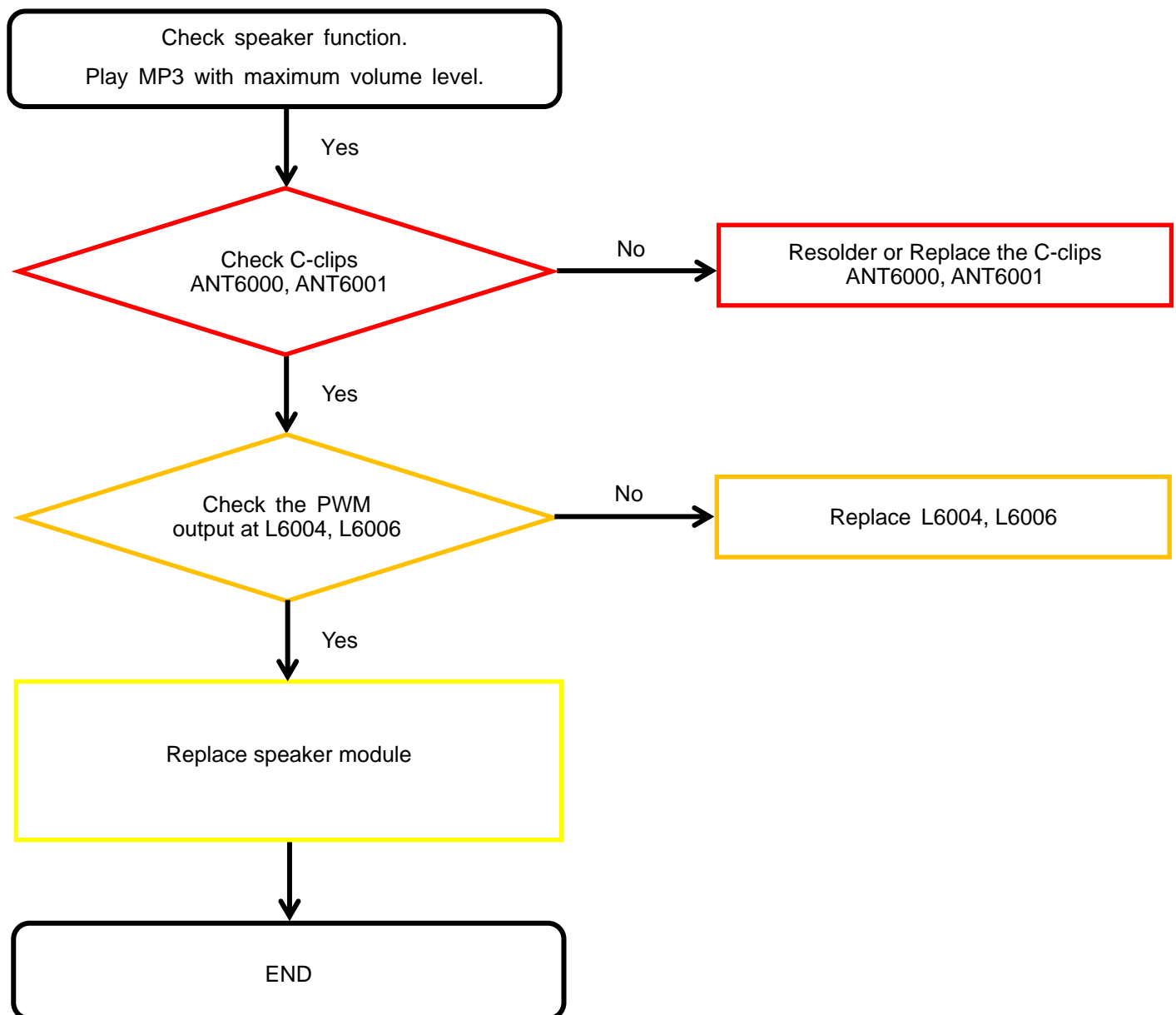
8. Level 3 Repair

8-4-8. Microphone Part - Main MIC



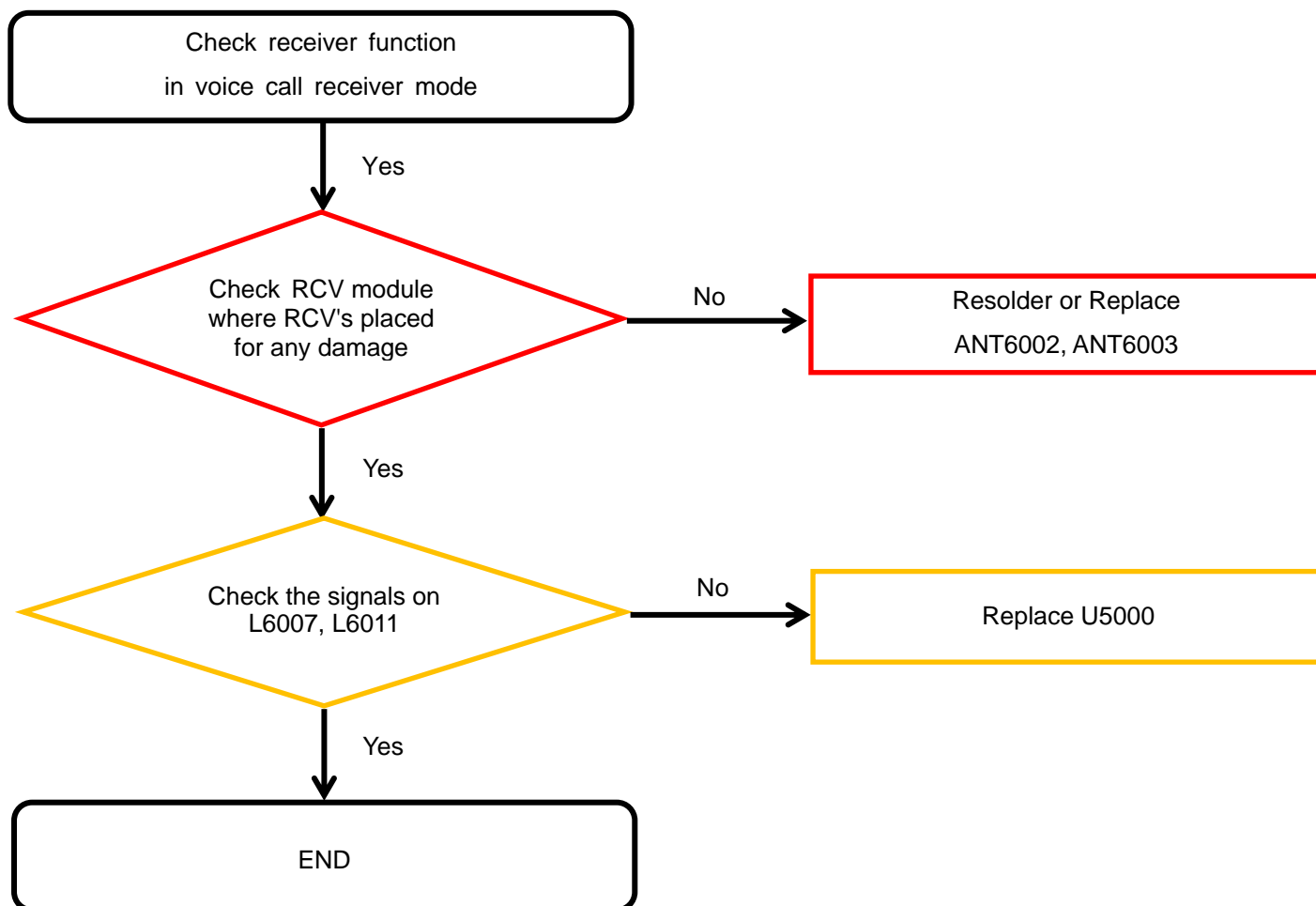
8. Level 3 Repair

8-4-9. Speaker Part



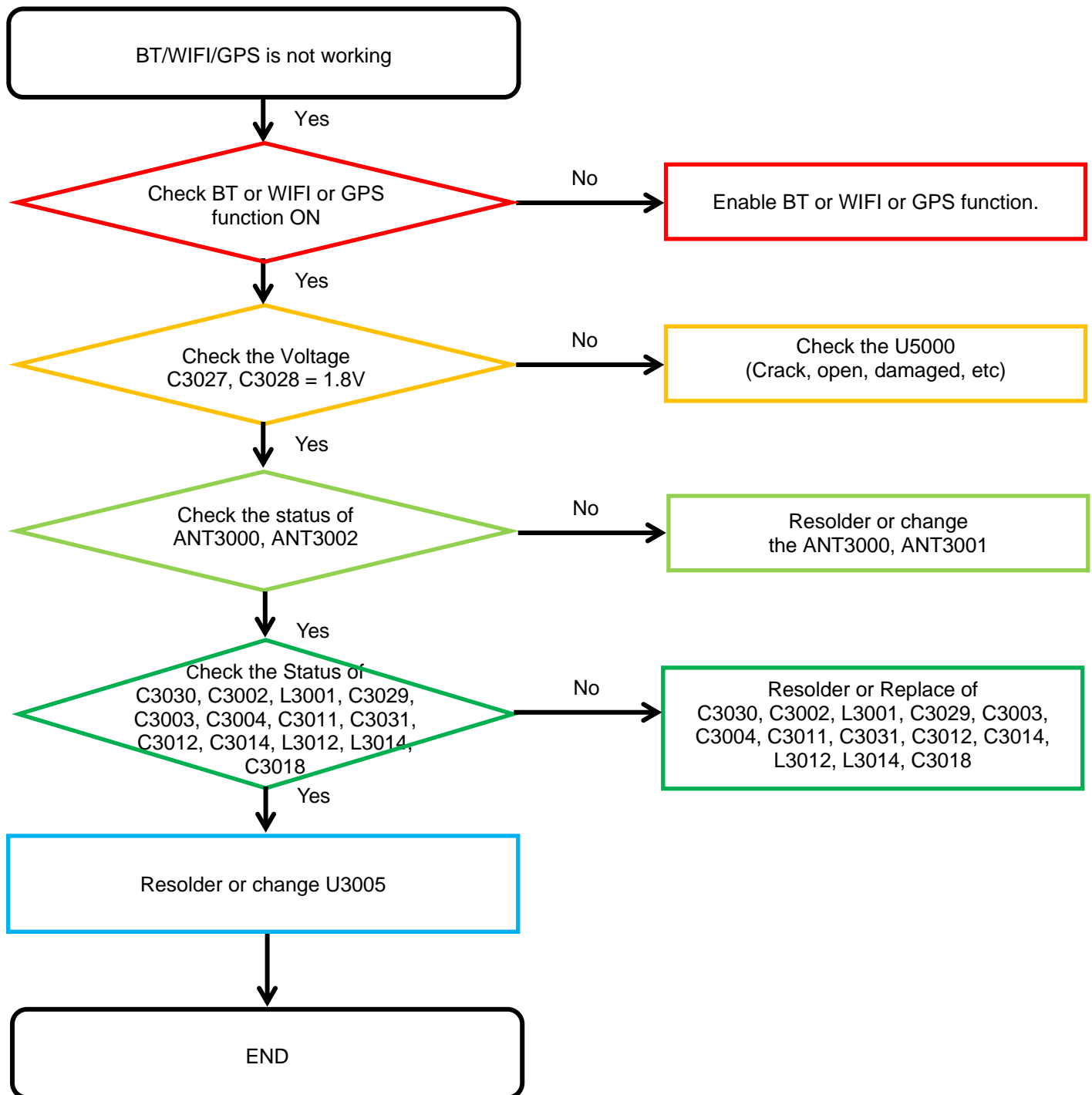
8. Level 3 Repair

8-4-10. Receiver Part



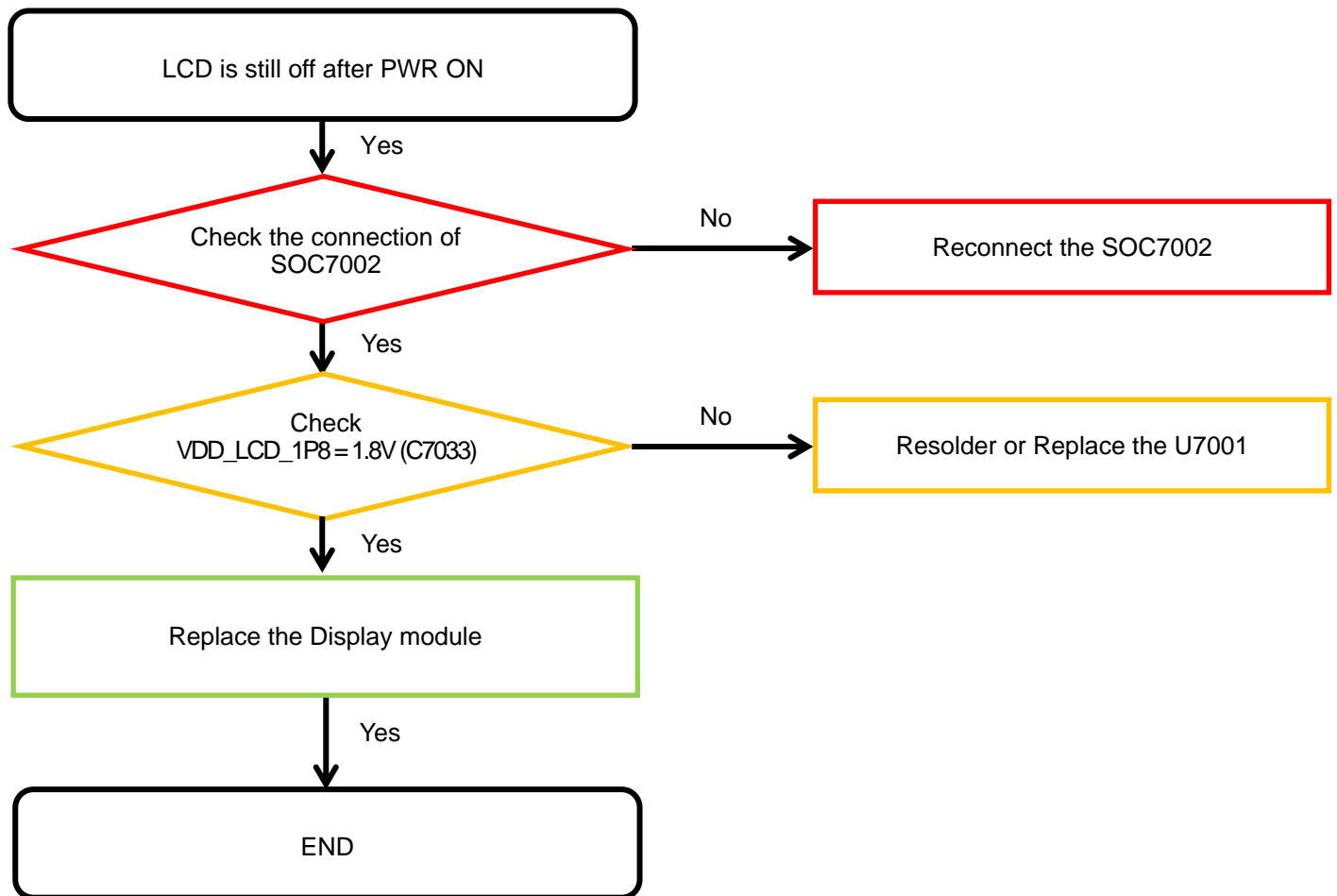
8. Level 3 Repair

8-4-11. BT/WIFI/GPS



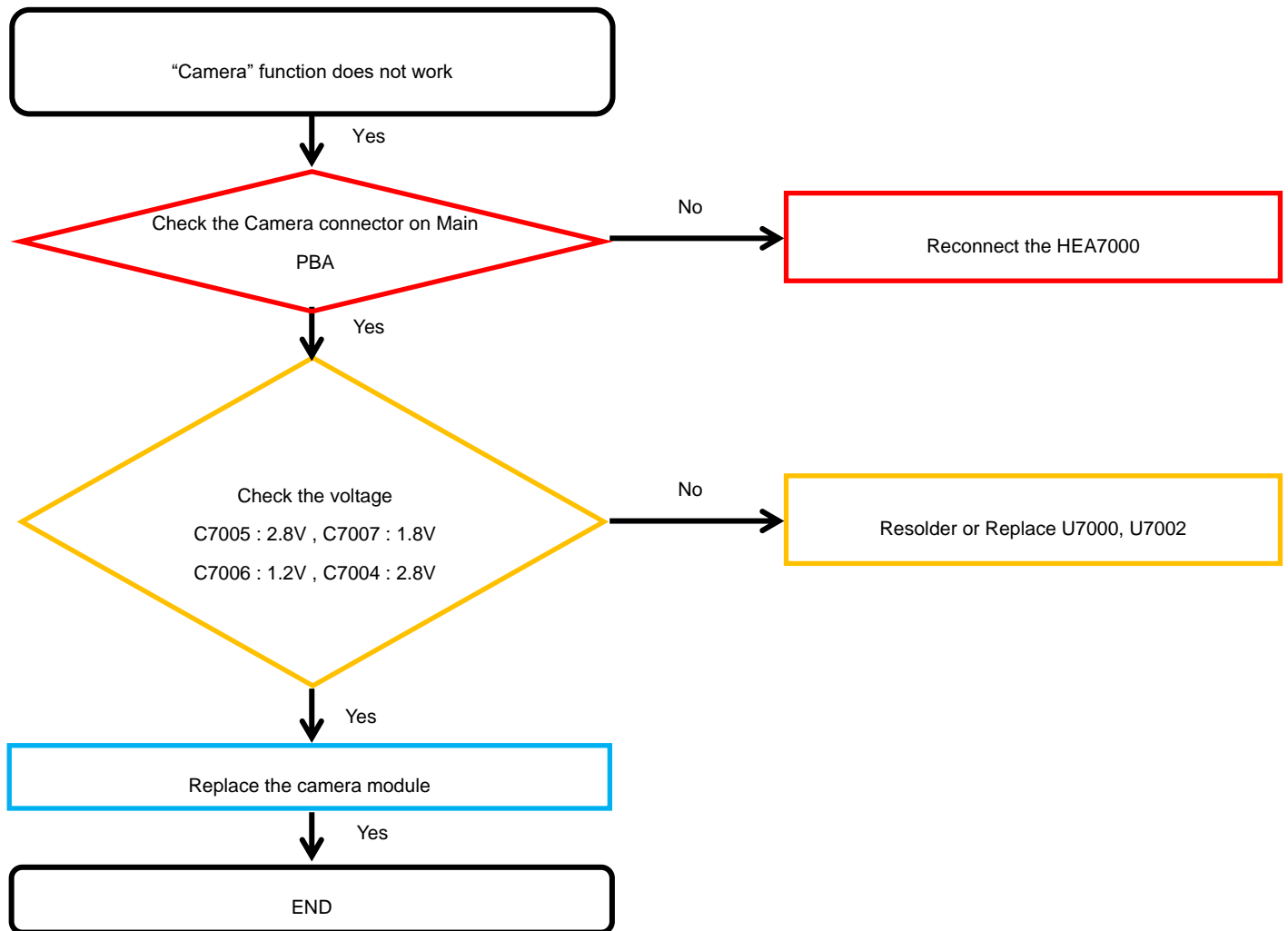
8. Level 3 Repair

8-4-12. Display



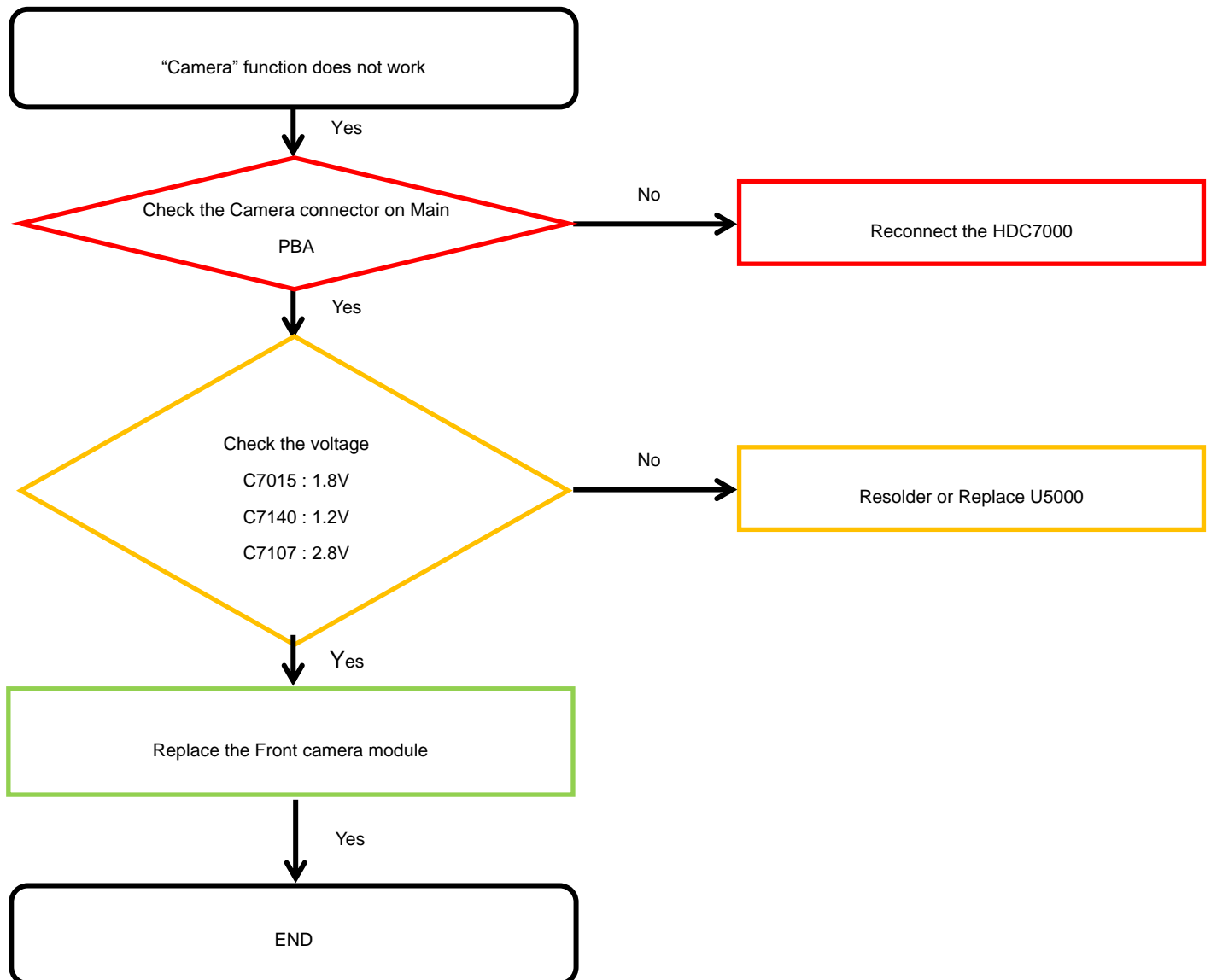
8. Level 3 Repair

8-4-13. 8M CAMERA



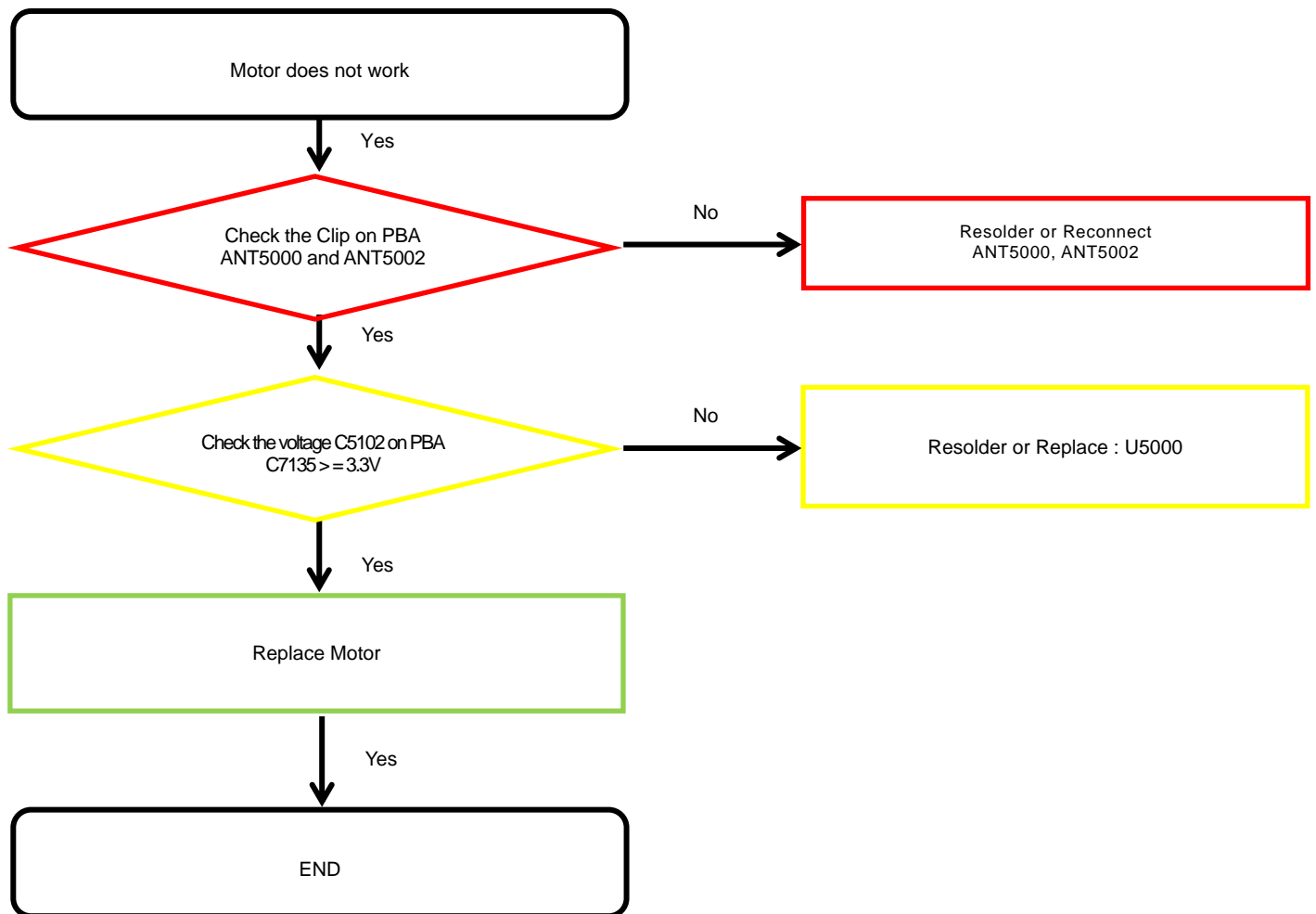
8. Level 3 Repair

8-4-14. 5M CAMERA



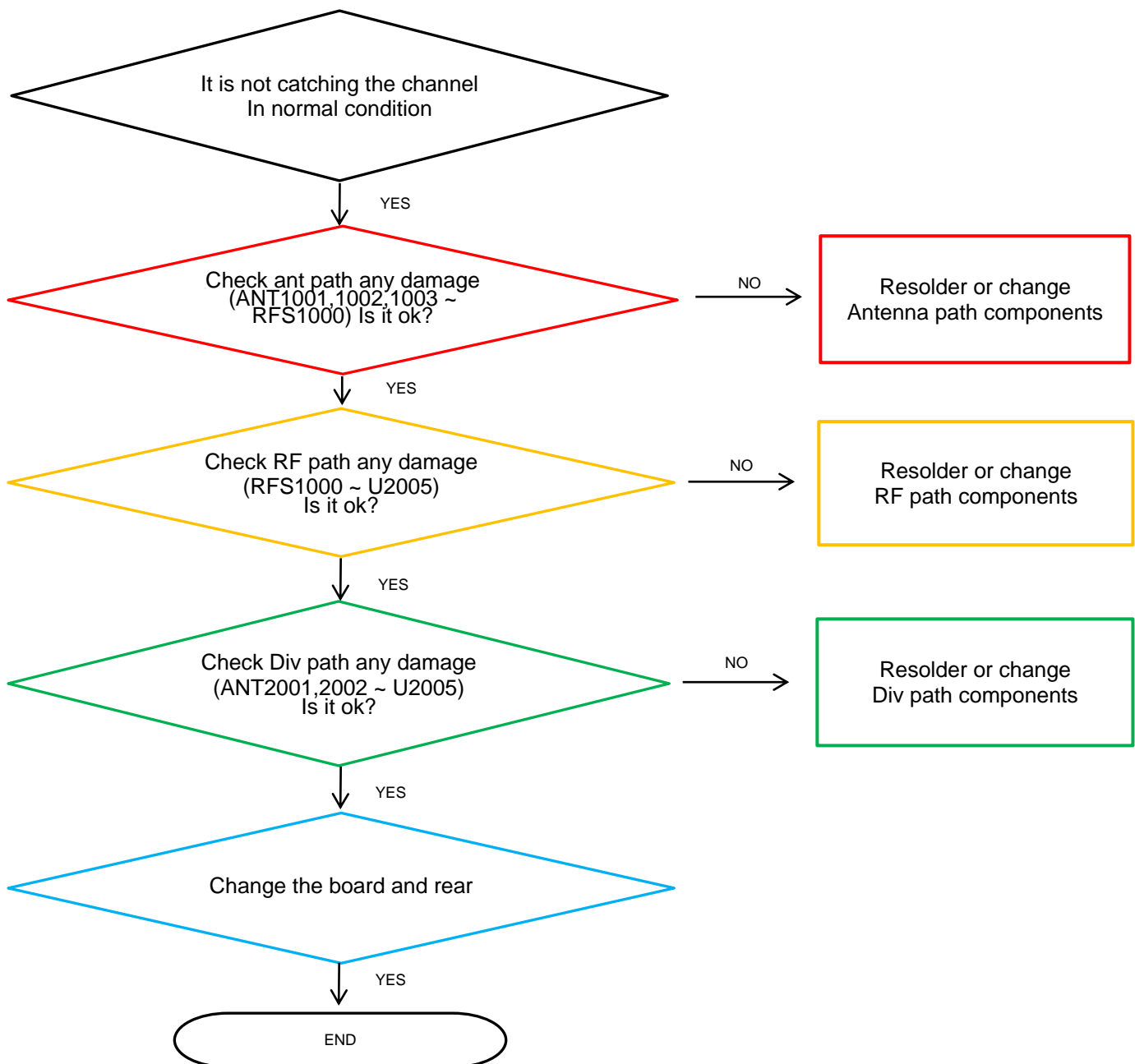
8. Level 3 Repair

8-4-15. Motor



8. Level 3 Repair

8-4-16. GSM/WCDMA/LTE1,2,3,4,5,8,12,13,17,20,28,66



8. Level 3 Repair

8-4-17. LTE7,38,40,41

